

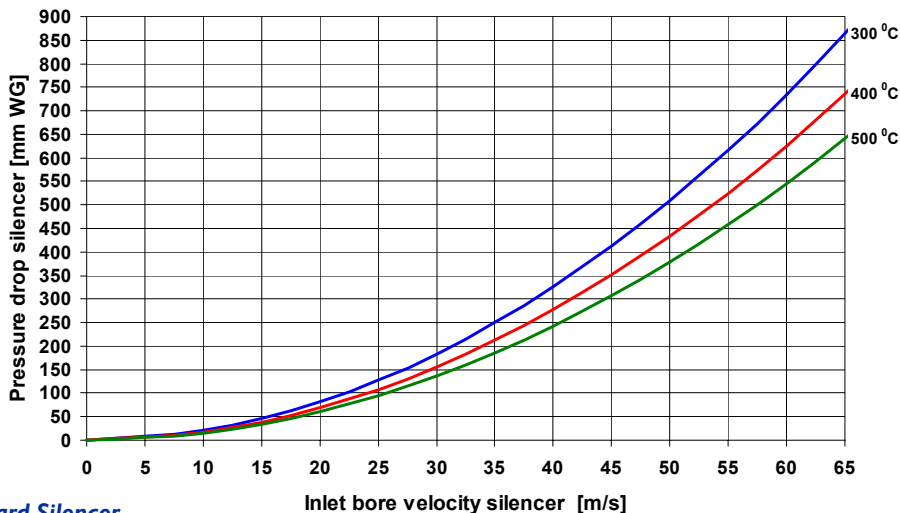


Silentor® Basic is a standard silencer based on Silentor's unique and patented technology for exhaust noise attenuation – a technology created during more than 30 years research and development.

The Silentor technology combines absorptive and reflective attenuation with advanced aerodynamics in such a way that it is possible to achieve the best possible relationship between superior attenuation, low backpressure and limited volume.

Silentor® Basic is smaller than Silentor® Classic but features the same unique Silentor technology providing excellent silencer characteristics but of course less attenuation in the low frequency area compared to the bigger silencer Silentor® Classic. Compared to traditional silencers of the same size Silentor® Basic has a superior ability to attenuate the broad-spectred area.

Silentor® Basic is the obvious choice for attenuation of exhaust noise from diesel- and gas engines for ships and vehicles, generators and power stations.



Technical specifications:

Attenuation:	Class 30 – 35 dB
Pressure loss:	See diagram
Dimensions:	See table below
Recommended gas velocity:	Max 65 m/s (inlet velocity)
Installation:	To achieve maximum attenuation it is recommended to install the silencer as close as possible to the engine.
Material:	Mild steel S235 JR G2. As an option the silencers can be supplied in stainless steel.
Surface treatment:	Anticorrosive transport paint
Accessories:	Fixed flanges according to DIN2573 drilling pattern. Silencers 7" are normally without fixed flanges.



Silentor® Basic CC						
Type	External dimensions [mm]			Flange [mm]		Weight (kg)
	A(ø)	B(ø)	E	J	K	
3"	88,9	280	1300	150	4 x ø18	30
4"	114,3	320	1500	170	4 x ø18	40
5"	139,7	400	1550	200	8 x ø18	60
6"	168,3	480	1600	225	8 x ø18	75
7"	193,7	560	1650	See technical specifications		100
8"	219	625	1910	280	8 x ø18	150
10"	273	806	2190	335	12 x ø18	240
12"	324	956	2580	395	12 x ø22	340

3"- 12" CC are available from stock in mild steel, as illustrated above.
Silencers can also be supplied in larger sizes and in stainless steel.

Silentor® Classic



SILENTOR

More power
Less pollution

Patented technology since 1972

Silentor® Classic is a standard silencer based on Silentor's unique and patented technology for exhaust noise attenuation – a technology created during more than 30 years research and development.

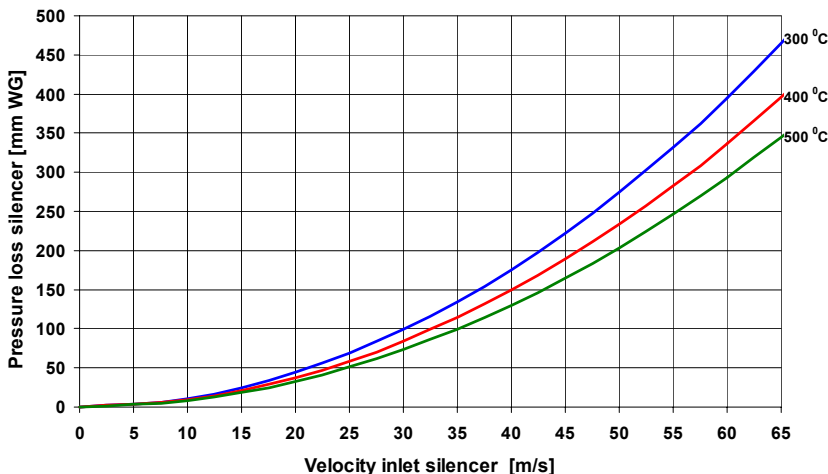
The Silentor technology combines absorptive and reflective attenuation with advanced aerodynamics in such a way that it is possible to achieve the best possible relationship between superior attenuation, low backpressure and limited volume.

Compared to traditional silencers, the Silentor technology is special because of the ability to attenuate the low-frequency noise including the very dominant noise from the firing frequency from four stroke engines.

Due to Silentor® Classic's unique attenuation performance in the low frequency area, Silentor® Classic silencers can be combined in series for use where attenuation requirements are very demanding.

All Silentor® Classic silencers 3-12 inch, centre outlet feature a spark arrestor as standard.

Silentor® Classic is the obvious choice for attenuation of exhaust noise from diesel- and gas engines for ships and vehicles, generators and power stations.



Technical specifications:

Attenuation:	Class 40 – 45 dB
Pressure loss:	See diagram
Spark arrestor:	Spark arrestor is tested and approved by Swedish Machinery Testing (SMP), regarding 3-12 inch, centre outlet
Dimensions:	See table below As an option the silencers can be supplied with side inlet and / or side outlet.
Recommended gas velocity:	Max 65 m/s (inlet velocity)
Installation:	To achieve maximum attenuation it is recommended to install the silencer as close as possible to the engine.
Material:	Mild steel S235 JR G2. As an option the silencers can be supplied in stainless steel.
Surface treatment:	Anticorrosive transport paint
Accessories:	Fixed flanges according to DIN2573 drilling pattern. Silencers 7" are normally without fixed flanges.



Silentor[®] Classic CC						
Type	External dimensions [mm]			Flange [mm]		Weight (kilo)
	A(ø)	B(ø)	E	J	K	
3"	88,9	280	2200	150	4 x ø18	50
4"	114,3	320	2200	170	4 x ø18	60
5"	139,7	400	2200	200	8 x ø18	80
6"	168,3	480	2200	225	8 x ø18	100
7"	193,7	560	2200	See technical specifications		130
8"	219	625	2570	280	8 x ø18	220
10"	273	806	2940	335	12 x ø18	350
12"	324	956	3100	395	12 x ø22	450

Silencers 3"- 12" CC are available from stock in mild steel, as illustrated above.
Silencers can be supplied with side inlet and / or side outlet and also in larger sizes.
As an option all silencers can be supplied in stainless steel.

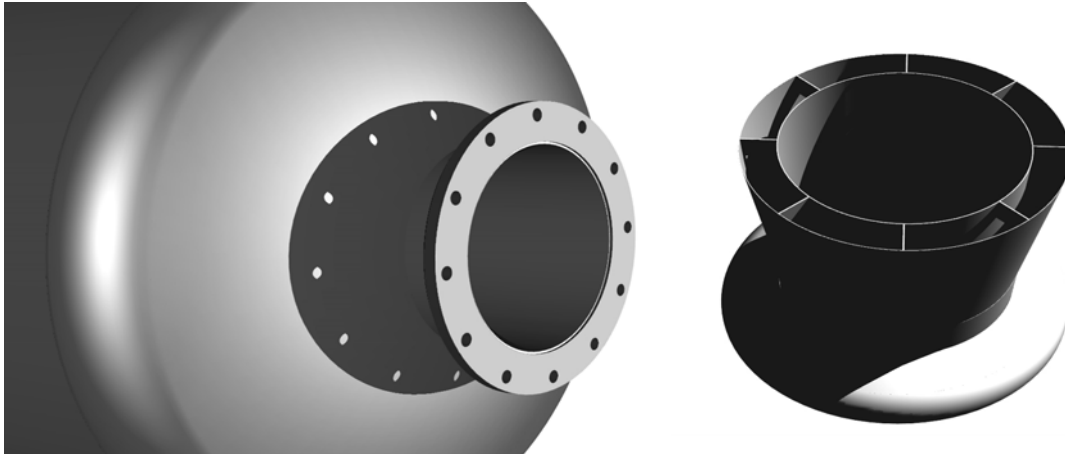
Silentor® Concept silencers

SILENTOR

Less pollution

More power

Patented technology since 1972



Silentor® Concept silencer is based on Silentor's unique and patented technology for exhaust noise attenuation – a technology created during more than 30 years research and development.

The Silentor technology combines absorptive and reflective attenuation with advanced aerodynamics in such a way that it is possible to achieve the best possible relationship between superior attenuation, low backpressure and limited volume.

Silentor® Concept silencers are available in four attenuation classes:

Simple:	20 – 25 dB
Basic:	30 – 35 dB
Classic:	40 – 45 dB
Superior:	50 – 55 dB

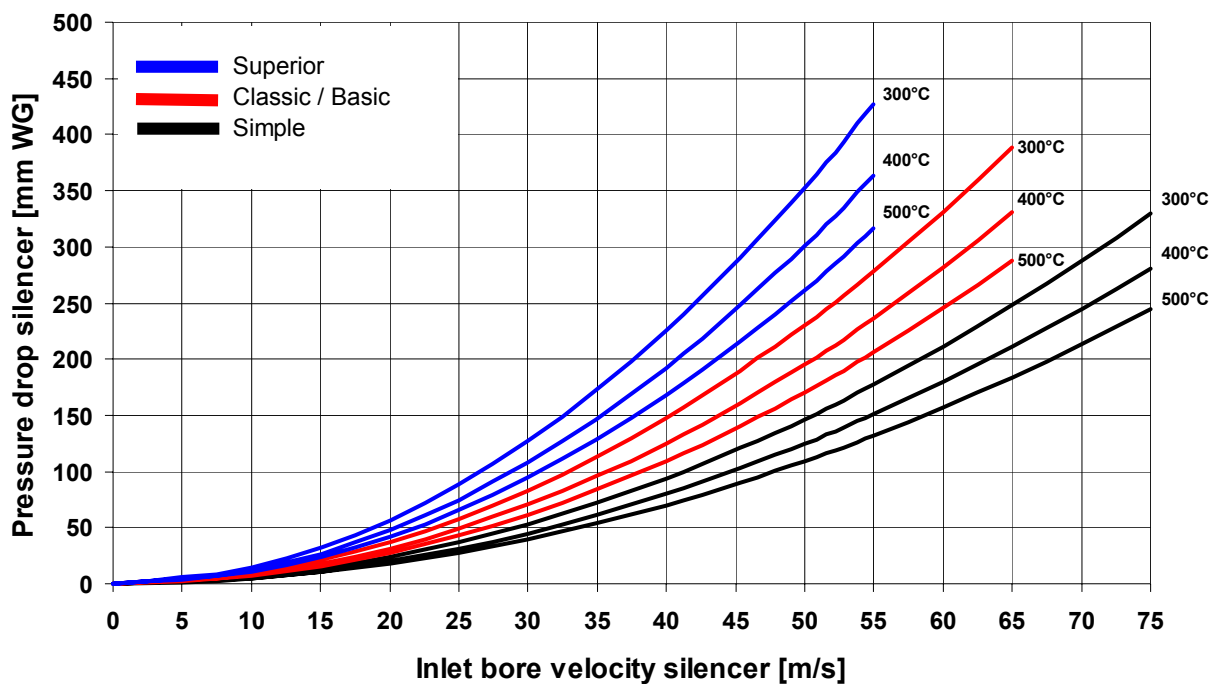
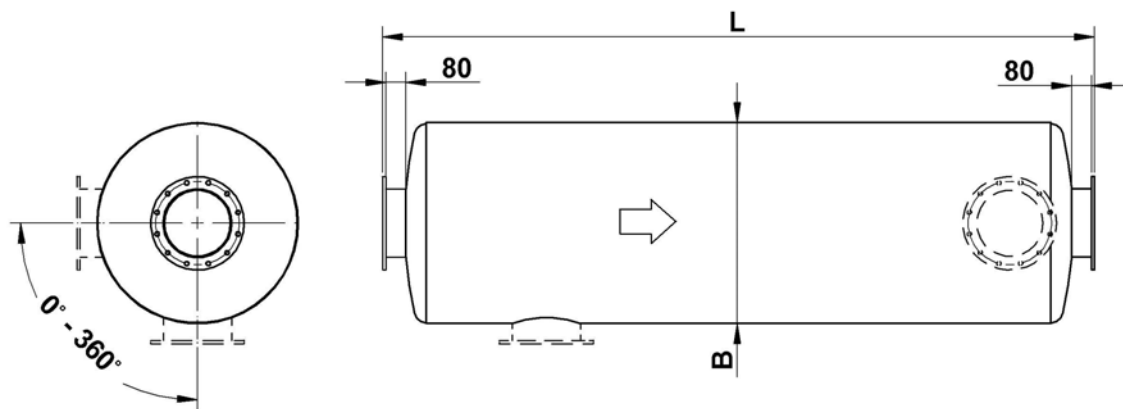
Compared to traditional silencers, the Silentor technology is special because of the ability to attenuate the low-frequency noise including the very dominant noise from the firing frequency from four stroke engines.

Silentor® Concept is the obvious choice for attenuation of exhaust noise from diesel- and gas engines for ships, offshores and vehicles, generators, and power stations.

Silentor® Concept silencers can be modified from case to case according to the customers requirement.

Technical specifications:

Attenuation:	Class 20-25dB, 30-35 dB, 40-45dB, 50-55dB
Pressure loss:	See diagram
Dimensions:	See data table. Concept silencers can be delivered in all combinations of central and side in- and outlet.
Recommended gas velocity:	See date table
Installation:	To achieve maximum attenuation it is recommended to install the silencer as close as possible to the engine.
Material:	Mild steel S235JRG2. As an option the silencers can be supplied in stainless steel.
Surface treatment:	Anticorrosive transport paint
Accessories:	Fixed flanges according to DIN86044 drilling pattern or other standards.



Inlet	Type Symbols	Simple class 20-25 dB	Basic class 30-35 dB	Classic class 40-45 dB	Superior class 50- 55 dB
DN350 14"	L [mm]:	1840	3140	3680	4340
	B [mm]:	756	756	856	1056
	Weight [kg]:	190	340	470	810
DN400 16"	L [mm]:	2030	3370	4030	4720
	B [mm]:	856	856	956	1156
	Weight [kg]:	250	420	600	990
DN450 18"	L [mm]:	2210	3620	4390	5120
	B [mm]:	956	956	1056	1256
	Weight [kg]:	320	530	800	1200
DN500 20"	L [mm]:	2420	3870	4730	5600
	B [mm]:	1056	1056	1156	1358
	Weight [kg]:	400	680	950	1430
DN550 22"	L [mm]:	2690	4190	4990	5730
	B [mm]:	1156	1156	1256	1458
	Weight [kg]:	530	840	1180	2034
DN600 24"	L [mm]:	2970	4540	5290	6060
	B [mm]:	1256	1256	1358	1558
	Weight [kg]:	640	1000	1550	2370
DN650 26"	L [mm]:	3250	4910	5590	6390
	B [mm]:	1358	1358	1458	1658
	Weight [kg]:	760	1180	1900	2710
DN700 28"	L [mm]:	3510	5260	5890	6720
	B [mm]:	1458	1458	1558	1758
	Weight [kg]:	1080	1630	2200	3090
DN750 30"	L [mm]:	3790	5630	6190	7000
	B [mm]:	1558	1558	1658	1858
	Weight [kg]:	1240	1880	2520	3500
DN800 32"	L [mm]:	4070	6000	6520	7270
	B [mm]:	1658	1658	1758	1958
	Weight [kg]:	1420	2150	2850	3950
DN850 34"	L [mm]:	4280	6280	6890	7550
	B [mm]:	1758	1758	1858	2060
	Weight [kg]:	1600	2475	3210	4880
DN900 36"	L [mm]:	4570	6670	7240	7830
	B [mm]:	1858	1858	1958	2160
	Weight [kg]:	1850	2800	3600	5420
DN950 38"	L [mm]:	4710	6920	7590	8140
	B [mm]:	1958	1958	2060	2260
	Weight [kg]:	2000	3100	4370	6250
DN1000 40"	L [mm]:	5025	7330	7940	8420
	B [mm]:	2060	2060	2160	2360
	Weight [kg]:	2475	3775	4960	6920
DN1100 44"	L [mm]:	5680	8190	8640	9070
	B [mm]:	2210	2210	2310	2512
	Weight [kg]:	3050	4625	5820	8780
DN1200 48"	L [mm]:	6260	9070	9370	9760
	B [mm]:	2360	2360	2462	2662
	Weight [kg]:	3725	5750	7760	10100
DN1300 52"	L [mm]:	6740	9690	10090	10440
	B [mm]:	2512	2512	2612	2812
	Weight [kg]:	4800	7300	8950	11660
DN1400 56"	L [mm]:	7290	10440	10970	11070
	B [mm]:	2662	2662	2762	2962
	Weight [kg]:	5500	8350	10240	13250
DN1500 60"	L [mm]:	7830	11180	11780	11750
	B [mm]:	2812	2812	2912	3112
	Weight [kg]:	6250	9450	11640	14920
DN1600 64"	L [mm]:	8380	11930	12580	12380
	B [mm]:	2962	2962	3062	3262
	Weight [kg]:	7050	10625	13030	16680
Maximum inlet gas velocity:		75m/s	65 m/s	65 m/s	55 m/s

www.silentor.com